



MONTHLY MEMBERSHIP PROGRESS REPORT

District 410 B

Results as of: 12/31/2017

GMT: RASHMI KOOVERJEE

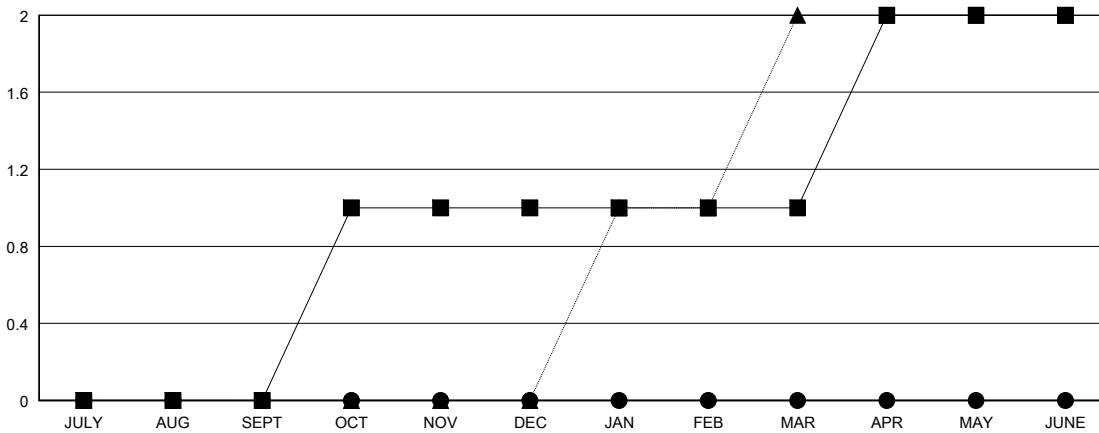
LOCATION REP OF SOUTH AFRICA

GMT CA

Clubs			
RESULTS FOR 2017-2018			
QUARTER	NEW CLUB GOAL	NEW CLUBS	DROPPED CLUBS
JULY/AUG/SEPT	0	0	0
OCT/NOV/DEC	1	0	2
JAN/FEB/MAR	0	0	0
APR/MAY/JUNE	1	0	0

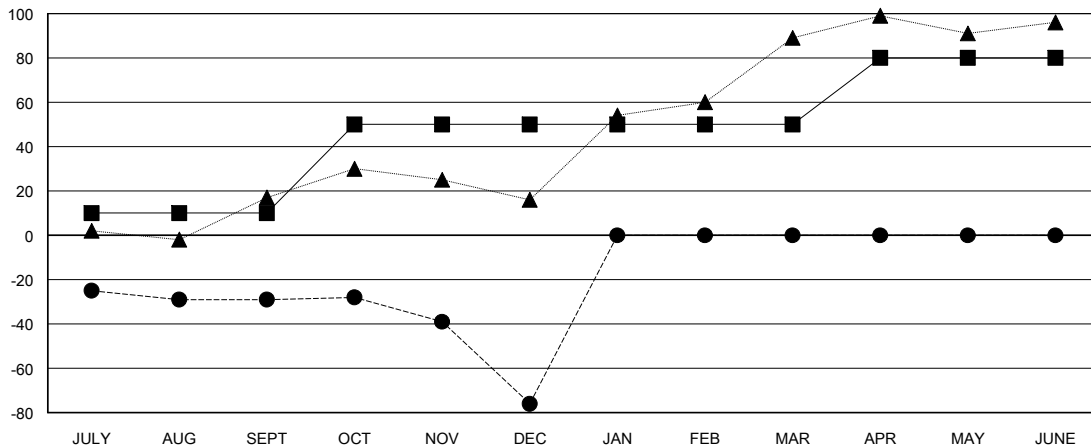
Members			
RESULTS FOR 2017-2018			
QUARTER	MEMBER GROWTH NET GOAL	MEMBER GROWTH ACTUAL	DROPPED MEMBERS ACTUAL (including transfers)
JULY/AUG/SEPT	10	13	41
OCT/NOV/DEC	40	17	60
JAN/FEB/MAR	0	0	0
APR/MAY/JUNE	30	0	0

GOALS AND ACTUAL NEW CLUBS CUMULATIVE



- - CURRENT YEAR GOALS FOR NEW CLUBS
- - CURRENT YEAR ACTUAL NEW CLUBS
- ▲ - LAST YEAR ACTUAL NEW CLUBS

GOALS AND ACTUAL MEMBERS CUMULATIVE



- - MEMBER GROWTH NET GOAL
- - MEMBER GROWTH ACTUAL
- ▲ - LAST YEAR MEMBERSHIP ACTUAL

DROPPED CLUBS: 2	13 CLUBS OF 41 ADDED 1 OR MORE NEW MEMBERS	GENDER DISTRIBUTION MALE 335 (51.22%) FEMALE 319 (48.78%) Women Percentage Fiscal Year Goal: 48%
DROPPED MEMBERS DECEASED 3 CLUB CANCELLED 21 OTHER 77 TOTAL 101	CLICK HERE FOR CUMULATIVE MEMBERSHIP DATA	TOTAL FAMILY UNIT MEMBERS 196 FAMILY MEMBERS PAYING HALF DUES 100